

1. GENERAL FEATURES:

Reading points: 4, temperature, light, wind intensity and rain detection;

Command: Via MD BUS;

Applications: Weather information current;

Installation: Outside the building.

2. GENERAL SPECIFICATIONS:

Voltage: 12VDC;

Consumption: 150mA @ 12VDC;

Storage Temperature: -10°C to 60°C;

Temperature Operating: -60°C to 60°C;

Readings:

Temperature: -60°C to 60°C;

Brightness: 10 levels;

Wind: 10 levels;

Rain: true/false;

Physical Specifications:

Box Plastic, self-extinguishing UL-94 V0;

Level of Protection: IP54, for outdoor use.

Directives:



3. COMPATIBILITY:

PCCWd Compatibility: Firmware 3.4 or higher version V3.2 or V3.31 with BUS Adapter;

Mordomus Software Compatibility: Mordomus Software v2015.2 or higher;

4. SECURITY:

Before making any connections, please read these instructions.

5. INSTALLATION:

1. Must handle carefully the parts of the module and ensure ITS correct assembly;
2. It is important to establish the place of installation so METEO IS exposed to the elements so then can be measure.

Note that if the METEO is installed to direct sunlight will measure temperatures according to the exposure, and different temperatures may be measured in the shade.

3. METEO should be inclined 45 ° relative to the horizon, so that the rain water runs down, as the Fig. 4;
4. Do not paint or polish METEO sensitive surface;
5. The accumulation of dirt on the rain sensor limits its sensitivity, which must be cleaned twice a year with a damp cloth or when it shows signs of dirt or incorrect readings.

If the chosen location for METEO has a difficult access and/or remote to the Mordomus console, it is advisable to carry out the address through a previous temporary connection with the frame and the console.

After this previous assemble the METEO in its place.

6. CONNECTIONS:

Thickness of conductors:

Circuit Bus:

CAT6 Cable F/UTP shielded, twisted;

Power Circuit:

CAT6 Cable F/UTP shielded, twisted;

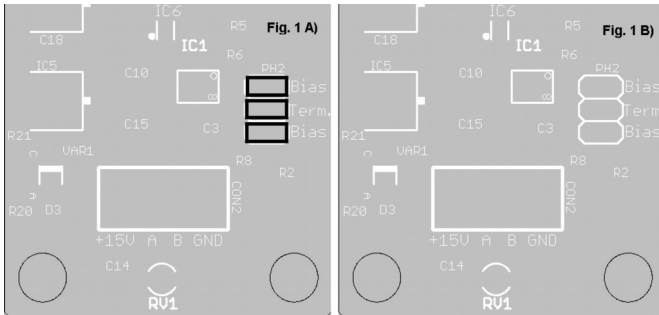
In case of installation with BUS ADAPTER, METEO should be at the end of RX Bus chain.

Connect the Bus:

To connect the BUS should use a twisted pair cable CAT6. For example: Green for **A** and Green/White to **B**. The shield should be connected to GND.

Connect the 12VDC power:

It is recommend the use of Mean-Well power supplies, DR60-12 and DR30-12.



In case the module is the last position on the bus, jumpers should be placed according to Fig 1 A) to close the BUS chain. In the case of bus length very long you may need only put the jumper Term. In other situations should remain as in Fig 1 B).

Fig 2:

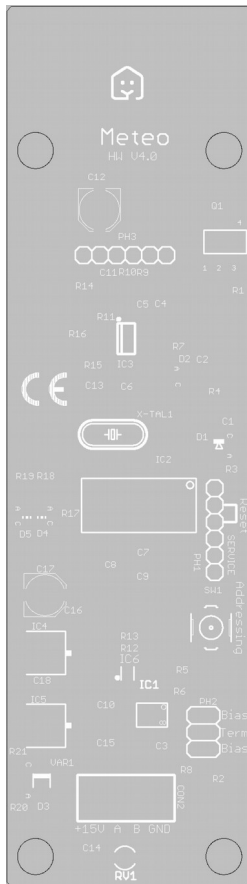


Fig. 4:



7. ADDRESSING AND CONFIGURATION:

After connected and powered, perform the following steps:

1. Open "Register modules" in the Mordomus software;
2. Press address (Addressing) inside the module. The Green LED will blink slowly and the red LED will pulse once.

Note that after three minutes without having assigned a new address, the module automatically returns to normal mode.

3. Set the desired address in the window now displayed on Software Mordomus.

8. FUNCTIONING:

Led Code:

D5 Green LED ON: Module powered;

D5 Green LED blinking briefly: Module receiving data;

D5 Green LED blinking continuously: Module awaiting address;

D4 Red LED blinking: module sending data.