



MSD Cyble

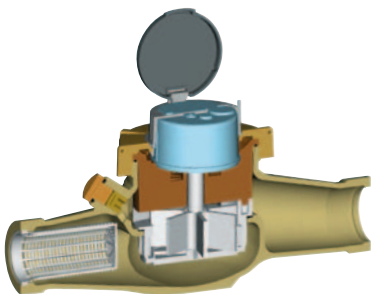
Multi-jet Turbine Water Meter

Available in sizes DN 25, 30, 40 & 50, MSD Cyble is a world class product, with over 10 years of proven experience showing excellent resistance in different conditions of water metering installations.

The technology

MSD Cyble is a multi jet type meter, which has as main characteristics, a measuring chamber designed to distribute the water flow around de turbine.

An extra dry register design, using direct magnetic transmission, enables to isolate completely all register gears against contact with water. This design enables to rotate the register to best comfort of reading the accounted volume on index.



Metrological Performance

Equivalent to class B meters according to ISO 4064-1: 1993 standard, and approved according to European Measuring Instruments Directive (MID) 2004/22/CE, annexe MI – 001. (see table on next page).

Standard Compliance

- » EEC 75/33 Directive
- » MID 2004/22/CE
- » ISO 4064-1 : 1993
- » ISO 4064-1 : 2005
- » OIML R49-1 : 2006



MSD Cyble Register
Plastic housing or Copper Can + Mineral Glass (IP68) options

Product Evolution

MSD Cyble can be upgraded by use of Automated Remote Reading features, thanks to its register that can be equipped with communicating interface modules for data transmission, for all different AMR solutions: wired, or wireless, fix or mobile network for data collection for different purposes.



AnyQuest Cyble fitted on MSD Cyble meter

Technical Specifications

Nominal diameter (DN)	mm	25		30		40	50
	inches	1"		1" ¼		1" ½	2"
MID Approval Certificate	LNE - 17976						
Permanent flowrate Q3	m³/h	4	6.3	4	6.3	10	16
Overload flowrate Q4	m³/h	5	7.9	5	7.9	12.5	20
Q3/Q1		50	63	50	63	50	50
Q2/Q1		1.6					
Position	Horizontal						
Peak flow	m³/h	7		10		20	30
Pressure loss group at Q3	bar	< 0.2	< 0.4	< 0.2	< 0.4	< 0.2	< 0.3
Maximum admissible temperature	°C	30					
Maximum Accidental Temperature for short periods (Water)	°C	50					

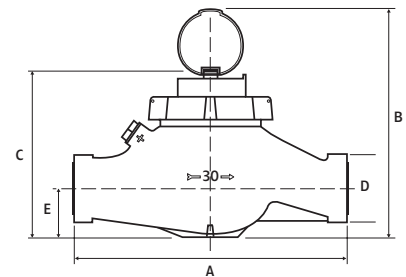


Product available in copper alloy housing or cast iron. Please, contact us for more information housin

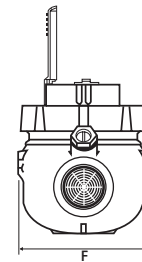
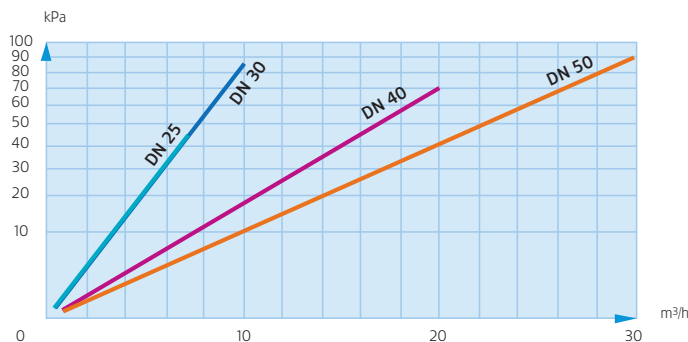
Dimensions

Nominal diameter (DN)	mm	25		30		40	50
	inches	1"		1" ¼		1" ½	2"
A ISO	mm	260		300			
B	mm	190		222		250	
C	mm	124		155		182	
D	inches	G 1" ¼ B		G 1" ½ B		G 2" B	G 2" ½ B
E	mm	34.5		45		53	
F	mm	103		128		132	
Weight (meter)	Kg	2.1		2.2		4.5	10

50 mm flanged version (ISO or DIN length) upon request.



HEAD LOSS



Dimensions



Our company is the world's leading provider of smart metering, data collection and utility software systems, with over 8,000 utilities worldwide relying on our technology to optimize the delivery and use of energy and water.

To realize your smarter energy and water future, start here: www.itron.com

For more information, contact your local sales representative or agency:

ITRON WATER METERING

9, rue Ampère
71031 Mâcon cedex
France

Phone: +33 3 85 29 39 00

Fax: +33 3 85 29 38 58